

## ***POLYPOGON VIRIDIS* (POACEAE): NEW TO LOUISIANA**

**MICHAEL H. MACROBERTS AND BARBARA R. MACROBERTS**

Herbarium (LSUS), Museum of Life Sciences  
Louisiana State University in Shreveport  
Shreveport, Louisiana 71115  
mmacrobe@lsus.edu

**CHARLES. M. ALLEN**

Allen's Nature Ventures, LLC  
Pitkin, Louisiana 70656  
native@camtel.net

### **ABSTRACT**

*Polypogon viridis* (Gouan) Breistr. is documented as growing outside of cultivation in Caddo Parish, Louisiana, the first record for the state. It is abundant in colonies in a city park in Shreveport.

We discovered *Polypogon viridis* (Gouan) Breistr., commonly known as water beardgrass or water bentgrass, growing in Columbia Park, a 4-hectare, frequently mowed, public park in Shreveport, Louisiana (Figs. 1, 2). This is the first record for this species in the state (Allen et al. 2004).

Voucher. **Louisiana.** Caddo Parish. City of Shreveport, Columbia Park (S of Columbia St., between Creswell Ave. and Line Ave., shaded mesic habitat near an intermittent stream, 2 May 2020, M. & B. MacRoberts 8999, 9000 (LSU, LSUS).

There are several stands of *Polypogon viridis* along the stream in Columbia Park, consisting of hundreds of individuals. The largest stand measures approximately 2 by 4 meters (Fig. 1). The plants are perennial, with culms sometimes decumbent and rooting at the lower nodes, which apparently accounts for the colonial tendency. Associated trees include *Betula nigra*, *Pinus taeda*, and *Pinus echinata*. Associated herbaceous species include *Alternanthera philoxeroides*, *Eleocharis tortilis*, *Hydrocotyle verticillata*, *Juncus bufonius*, and *Tradescantia ohiensis*.

*Polypogon viridis* is native to Europe and occurs as far west as Pakistan (Barkworth 2007). It is naturalized and established in the western USA east to Texas and Oklahoma (Kartesz 2014; Turner et al. 2003). Records from the Atlantic coast of the USA are based on plants found only on ballast dumps (Barkworth 2007). According to Nesom (2009), in Texas the species is not considered to be of particular threat to native species.

Interestingly, while researching this species we discovered a specimen collected by A.B. Langlois (Ewan 2005) in 1885 in Plaquemines Parish, Louisiana, at the mouth of the Mississippi River “on ballast ground” (Fig. 3). This specimen is now housed in WIS, making our discovery in Shreveport actually the second for the state.

### **ACKNOWLEDGMENTS**

Mary Barkworth (USU), Kenneth Cameron (WIS), Mark Wetter (WIS), and Jerome Lewis (LSUS) aided in this work.

**LITERATURE CITED**

- Allen, C.M., D.A. Newman, and H. Winters. 2004. Grasses of Louisiana (ed. 3). Allen's Native Ventures LLC, Pitkin, Louisiana.
- Barkworth, M.E. 2007. *Polypogon viridis*. Page 663, in *Flora of North America North of Mexico*, Vol. 24.
- Ewan, J.A. 2005. Notes on Louisiana botany and botanists, 1718-1975. *Sida* 21: 2275–2296.
- Kartesz, J.T. 2014. The Biota of North America Program (BONAP). Chapel Hill, North Carolina.
- Nesom, G.L. 2009. Assessment of invasives and ecological impact on non-native plants of Texas. *J. Bot. Res. Inst. Texas* 3: 971–991.
- Turner, B.L., H. Nichols, G. Denny, and O. Doron. 2003. Atlas of the Vascular Plants of Texas. Vol. 1. *Sida, Bot. Miscell.* 24. Bot. Res. Inst. of Texas, Fort Worth.



Figure 1. *Polypogon viridis*. Naturalized population in Columbia Park, Shreveport. 2 May 2020.



Figure 2. *Polypogon viridis*. Columbia Park, Shreveport. 2 May 2020.

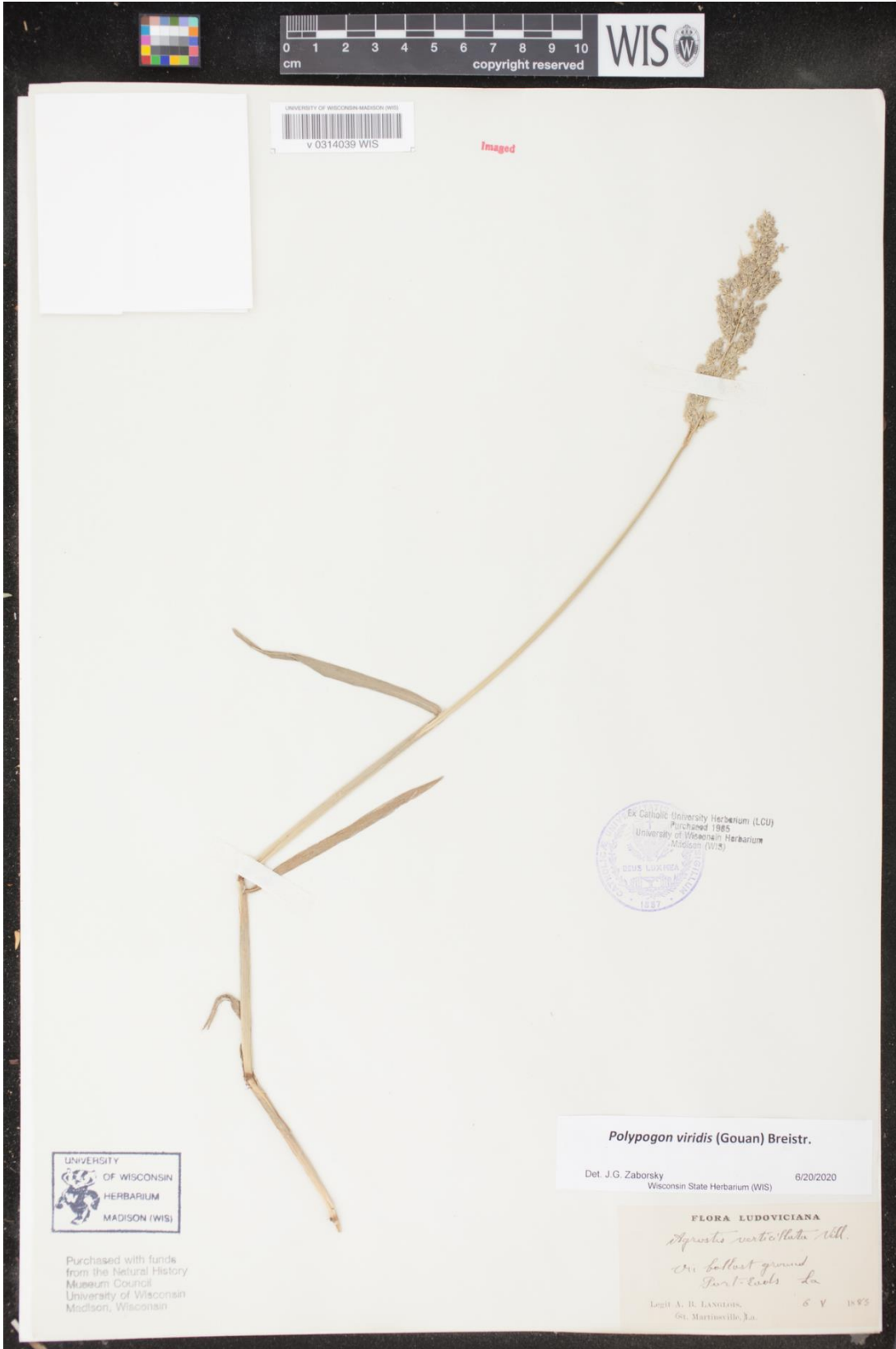


Figure 3. *Polypogon viridis*. Louisiana. Plaquemines Parish. Port Eads, ballast ground, 6 May 1885, Langlois s.n. (WIS).