

TWO ADDITIONS TO THE FLORA OF CONNECTICUT

ERIC E. LAMONT

Honorary Curator

The New York Botanical Garden

Bronx, New York 10458

elamont@optonline.net

ABSTRACT

Gamochaeta pensylvanica (Asteraceae) and *Herniaria hirsuta* subsp. *cinerea* (Caryophyllaceae) are documented as new to the flora of Connecticut. Populations of both species are located in highly disturbed urban habitats in the city of New Haven.

Three individuals of *Gamochaeta pensylvanica* (Willd.) Cabrera were discovered in 2021 in a residential garden in New Haven, Connecticut. A second, larger population consisting of approximately 60 individuals also was located in 2021, 1.8 km from the first population, in downtown New Haven (Fig. 1). The second site was revisited in 2022 and 2023 and the population was extant and thriving.

Voucher specimens. Connecticut. New Haven Co.: New Haven, corner of Maple Street and Pendleton Street, residential garden bordering a lawn, 27 Sep 2021, *Lamont s.n.* (NYS); downtown New Haven, Broadway Triangle near the Civil War Memorial, weedy lawn, 7 Nov 2021, *Lamont s.n.* (NYS). Figure 2.

Gamochaeta pensylvanica has not previously been recorded from Connecticut (Nesom 2006, Haines 2011, Dreyer et al. 2014, USDA NRCS 2025). It is widespread in ruderal habitats worldwide and in North America occurs primarily along the Atlantic and Gulf coasts (Nesom 2004, 2006). As reported by Atha et al. (2016), “*Gamochaeta pensylvanica* appears to be adventive and expanding in the New York City region, where the plants are most often encountered in sidewalk medians, lawns, and weedy areas with low vegetation.” It was reported as established and widespread on Long Island, New York (Lamont 2024). The species is thought to be native to South America, where the genus is most abundant (Nesom 2004).

More than 12 individuals of *Herniaria hirsuta* L. subsp. *cinerea* (DC.) Cout. [= *H. cinerea* DC.] were located in August 2016 in sidewalk cracks in New Haven. Two weeks later, a visit to the site revealed the sidewalk had been treated with herbicide and the colony had been eliminated. A cursory search of other parts of State Street and Bishop Street revealed more than 100 individuals growing in sidewalk medians and cracks and residential driveways. The population was extant and thriving in 2017–2019, 2021, and 2022 (Lamont, pers. obs.).

Voucher specimen. Connecticut. New Haven Co.: New Haven, State Street, sidewalk cracks, 23 Oct 2017, *Lamont s.n.* NYS. (Fig. 3).

Herniaria hirsuta subsp. *cinerea* has not previously been recorded from Connecticut (Thieret et al. 2005, Haines 2011, Dreyer et al. 2014, USDA NRCS 2025). It is native of Mediterranean Europe, north Africa, and southwest Asia (Thieret et al. 2005). In the eastern USA it has been recorded from Maryland, Massachusetts, New York, Pennsylvania, and Wisconsin (USDA NRCS 2025). Sixty kilometers east of New Haven, a population was recorded in 2015 on Plum Island, New York, where “more than 60 individuals were located on low dunes, swales, and sandy/gravelly disturbed sites” (Lamont & Young 2018).

ACKNOWLEDGEMENTS

I thank Richard Stalter and Guy Nesom for reviewing the manuscript and providing helpful suggestions.

LITERATURE CITED

- Atha, D., R. Alvarez, D. Feeser, M. Feder, Z. Wang, and R. Kelly. 2016. *Gamochaeta pensylvanica* (Asteraceae) is established in the New York flora. *Phytoneuron* 2016-22: 1–4.
- Dreyer, G., C. Jones, R. Capers, P. Sweeney, N. Barrett, P. Sharp, C. Ultee, L. Brown, S. Saulys, E. Corrigan, J. Barrett, and N. Murray. 2014. Native and naturalized vascular plants of Connecticut checklist. *Mem. Conn. Bot. Soc.* 5: 1–233.
- Haines, A. 2011. *Flora Novae Angliae*. Yale Univ. Press, New Haven, Connecticut.
- Lamont, E.E. 2024. Noteworthy plants reported from the North Fork of Long Island, NY. *Long Island Bot. Soc. Nsltr.* 34: 20–23.
- Lamont, E.E. and S.M. Young. 2018. Noteworthy plants reported from Long Island, New York. *Long Island Bot. Soc. Newsltr.* 28: 15, 17–20.
- Nesom, G.L. 2004. New species of *Gamochaeta* (Asteraceae: Gnaphalieae) in the eastern United States and comments on similar species. *Sida* 21: 717–741.
- Nesom, G.L. 2006. *Gamochaeta*. Pp. 431–438, in *Flora of North America North of Mexico*, Vol. 19. Oxford Univ. Press, New York and Oxford.
- Thieret, J.W., R.L. Hartman, and R.K. Rabeler. 2005. *Herniaria*. Pp. 43–45, in *Flora of North America North of Mexico*, Vol. 5. Oxford Univ. Press, New York and Oxford.
- USDA, NRCS. 2024. The PLANTS Database. National Plant Data Team, Greensboro, North Carolina.



Figure 1. *Gamochaeta pensylvanica* in Broadway Triangle, city of New Haven. Photo by Eric Lamont, 7 October 2022.



Figure 2. Voucher of *Gamochaeta pensylvanica*. Lamont s.n. (NYS), 7 Nov 2021.

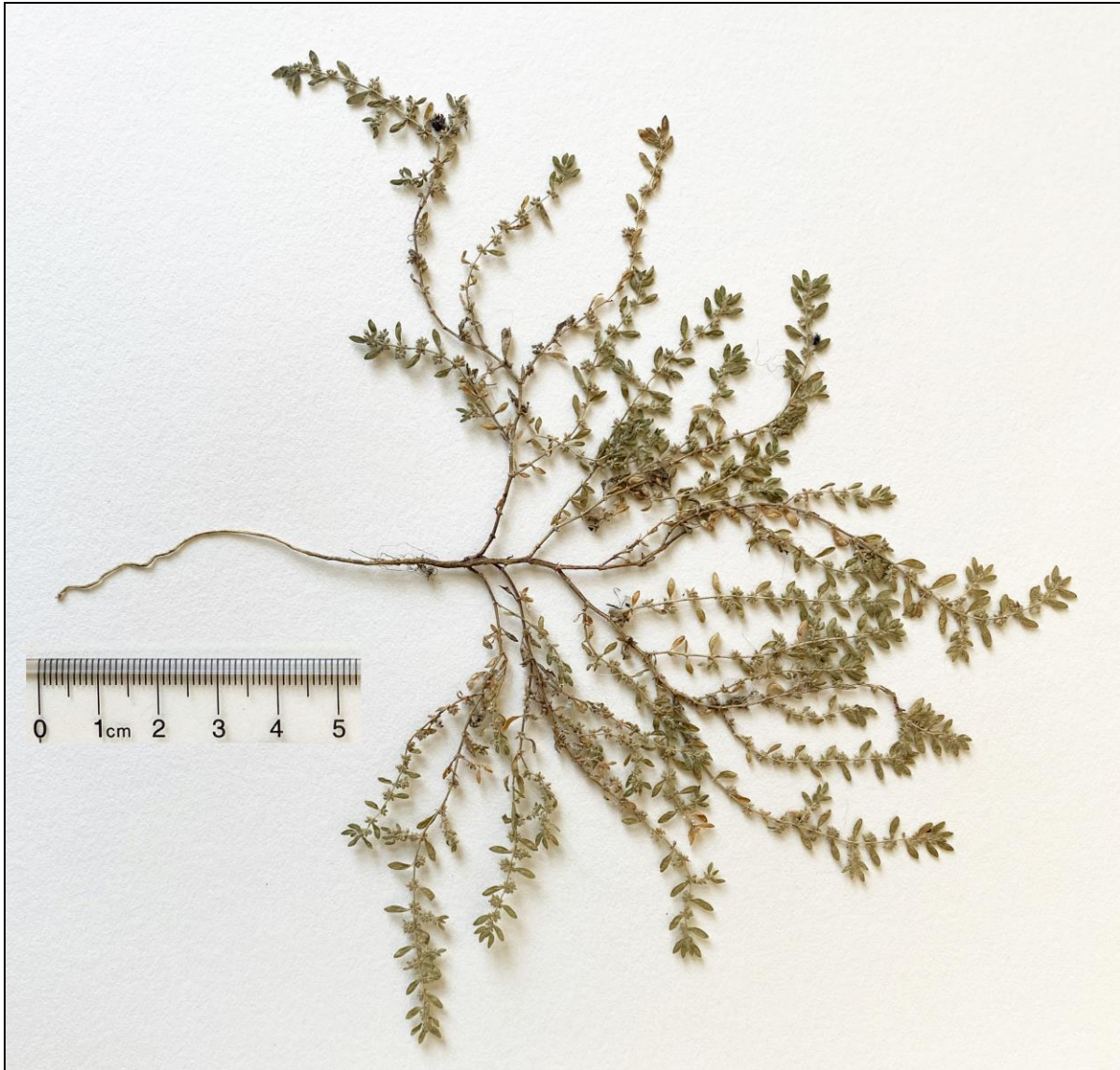


Figure 3. Voucher of *Herniaria hirsuta* subsp. *cinerea*. Lamont s.n. (NYS), 23 Oct 2017.