

***PYRROCOMA PYRAMIDIS* (ASTERACEAE: ASTEREAE),  
A NEW SPECIES FROM NEVADA**

**GUY L. NESOM**

Research Associate

Academy of Natural Sciences of Drexel University

Philadelphia, Pennsylvania

guynesom@sbcglobal.net

**ABSTRACT**

***Pyrrocoma pyramidis*** Nesom, **sp. nov.**, is described and illustrated from southern Washoe Co., Nevada, where it is known only from a single locality just southwest of Pyramid Lake.

Plants of *Pyrrocoma* from near Pyramid Lake in southern Washoe Co. Nevada, are distinct in the genus and are described here at specific rank — 16 plants, consistent in morphology, are represented on the 6 sheets of the collection. They are characterized by a low habit, a basal rosette of evenly serrate leaves with white-villous vestiture, stems with smaller, lanceolate cauline leaves and 1–2 relatively small heads, and involucre with (2–)3 series of graduate phyllaries. They are similar in aspect to plants of *P. lanulosa* Greene but distinct in aspects of leaf base, vestiture, inflorescence, and involucre morphology (Nesom 2025, and see diagnosis).

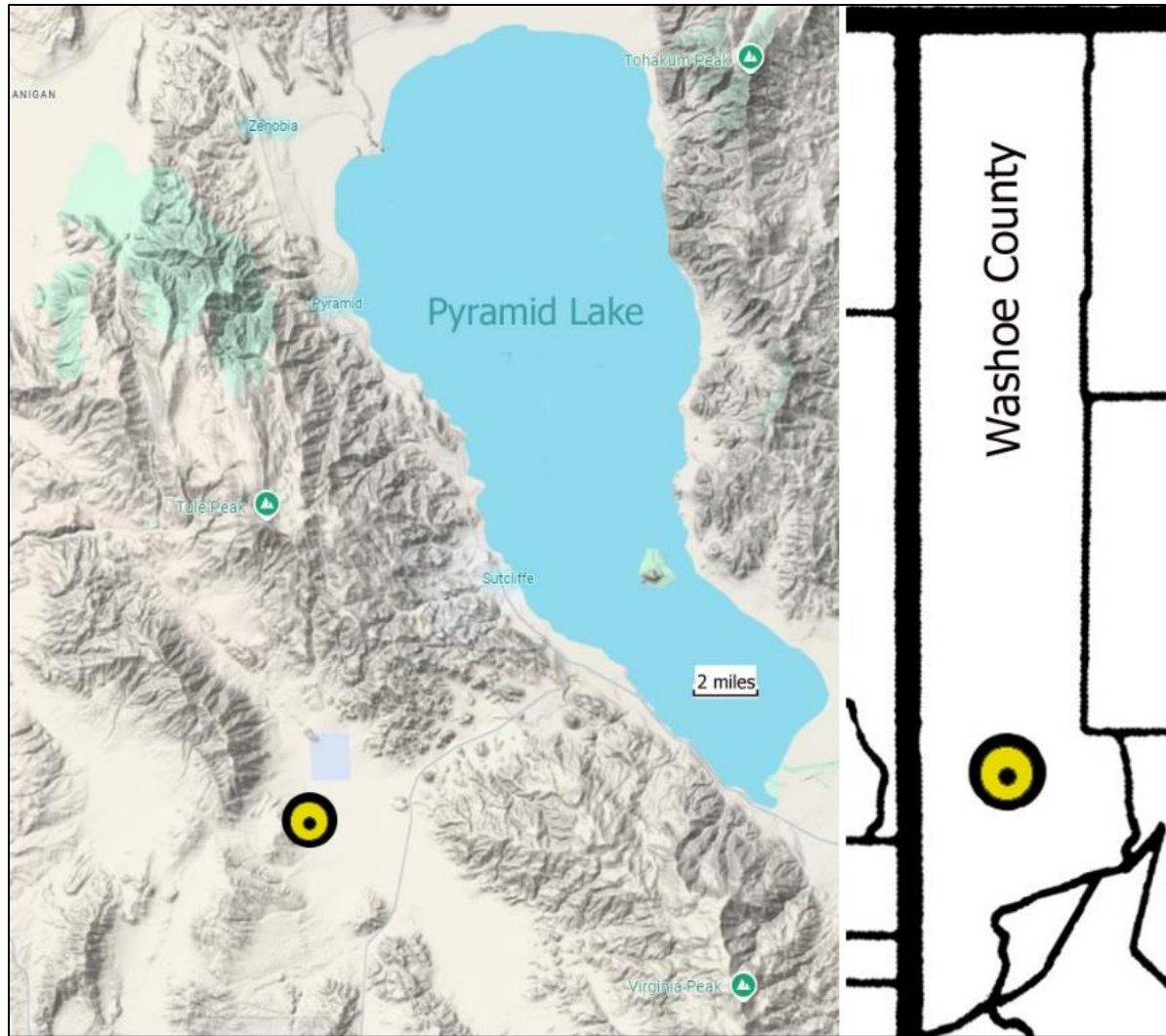
**PYRROCOMA PYRAMIDIS** Nesom, **sp. nov.** **TYPE:** Nevada. Washoe Co.: Warm Springs Valley, 5.2 road mi NW of Hwy 445 to Pyramid Lake on the Milk Ranch road to Winnemucca Valley, T23N, R20E, Sec 27 [39.83180° N, 119.72471° W], in and about saline seepage areas, with *Sarcobatus*, 4500 ft, 25 Jun 1986, A. Tiehm 10653 (holotype: NY; isotypes: COLO, ID, IDS, NCSC, OSC, TEX).

Similar to *Pyrrocoma lanulosa* in the hairy stems, leaves, and involucre but distinct in the white-cottony, eglandular vestiture (vs. hirsute-strigose, stipitate-glandular), persistently fibrous petiole bases, fewer and smaller heads, and white-hyaline phyllary margins. Out of range for *P. lanulosa* and in a different habitat.

**Stems** erect to ascending-erect, 8–16 cm, white-villous, eglandular, from a distinct taproot. **Leaves:** basal lanceolate to elliptic-lanceolate or oblanceolate, 3.5–7 cm, gradually attenuate to a petiole or petiolar region 1/3–1/4 the leaf length, fibrous remnants present, blades 3–14 mm wide, margins evenly serrate with 8–12 pairs of shallow, sharp teeth, white-villous, eglandular, cauline 4–6, reduced in size distally, oblong-lanceolate, subclasping. **Heads** (1–)2–3, not immediately subtended by bracts, on peduncles 2–3 cm long. **Involucre** 10–12 mm wide (pressed); phyllaries oblong-lanceolate with a triangular apex, in 2–3 series of unequal length, inner 6–7 mm long, green patch oblong, in the distal 1/3–1/2. **Ray florets** 12–18, fertile, corollas 8–11 mm long, 1.5–2 mm wide, coiling. **Disc corollas** 5.5–6.5 mm long. **Achenes** 3–3.5 mm long, sparsely villous-strigose with fine, loosely appressed hairs. Map 1, Figures 1–4.

**LITERATURE CITED**

Nesom, G.L. 2025. Taxonomy of the *Pyrrocoma hirta* group (Asteraceae: Astereae). Phytoneuron 2024-n: 1–29.



Map 1. Distribution of *Pyrocoma pyramidis*. Washoe Co., Nevada.



Figure 1. *Pyrocoma pyramidis*. Tiehm 10653 (NY), holotype.





Figure 2. *Pyrrocoma pyramidis*. Tiehm 10653 (NCSC), isotype.



Figure 3. *Pyrrocoma pyramidis*. Tiehm 10653 (ID), isotype.





Figure 4. *Pyrrocoma pyramidis*. Plant bases, showing persistent fibers of old petiole bases.